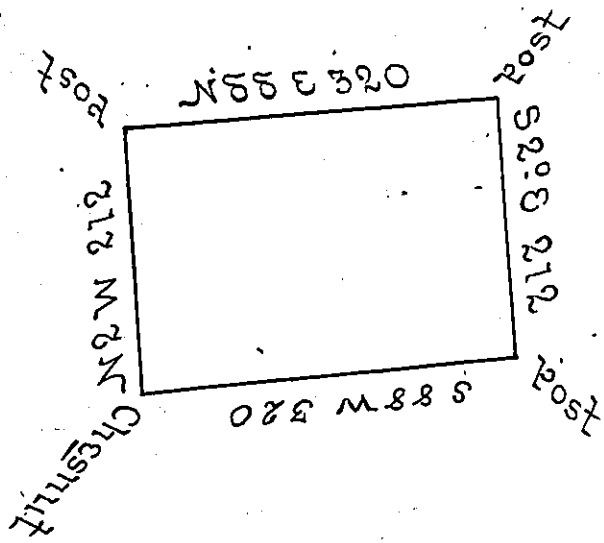


William Wister

West Boundary of Penna



John Willson

James Willson

The above is a draught of a survey made the 10<sup>th</sup> of June 1796 in pursuance of a Warrant granted William Wilson on the 14<sup>th</sup> April 1792 situated on the waters of Big Beaver Creek in Alleghany County containing four hundred acres and allowance of six per Cent Called Canton.

Thomas Stokely  
D.S.

Daniel Brodhead Esq<sup>r</sup> }  
Surveyor General of Penna. }

IN TESTIMONY that the above is a copy of the original remaining on file in the Department of Internal Affairs of Pennsylvania, made conformably to an Act of Assembly approved the 16th day of February, 1833, I have hereunto set my Hand and caused the Seal of said Department to be affixed at Harrisburg, this fifth day of November 1901.

*James W. Pitta*  
Secretary of Internal Affairs.